

Washington Web

Washington Elementary School
1112 West 11th Street
Marshfield, WI 54449
715-387-1238



www.marshfield.k12.wi.us

Jenna Southworth, Principal
southworth@marshfieldschools.org
Lori Immerfall, Secretary
immerfall@marshfieldschools.org

September 2019

From the Principal's Desk:

Welcome to Washington Elementary School!

Washington is the perfect place to learn and grow! Whether you are returning or new, I know that you will thrive here. We have a dedicated staff and a strong school community that is committed to engaging all students in a high-quality education. We are proud to offer a wide range of opportunities for all of our students to succeed not only academically but as a person of good character and as a civic minded community member. We integrate technology as a tool to foster Personalized Learning to create a variety of ways for learners to show what they know and to give them additional tools to explore new skills and concepts. Each student has an iPad in addition to other technology options for learning.

Together our Washington School community will work hard to continue the legacy of academic success and ensure each student's educational experience is positive as well as addressing their social and emotional safety. In addition to our high academic expectations, we also cultivate a strong work ethic, imagination, creativity, and positive social skills through our district's PBIS Program (Positive Behavior Intervention Support). We refer to these attributes as the "Washington Be-Attitudes." These are: Be Respectful, Be Responsible, Be Safe. All school and classroom expectations are aligned with these important attributes, so students know that this is a safe and caring school. Each month we honor a student at each grade level with the "George Award" for courage, good character and service to others. It is named after our first president to acknowledge that he developed these attributes as a young person, just like our students.

At Washington, the staff and I are excited to work with families and encourage all parents to become an active participant in their child's education. Additionally, I encourage parents to become an active member of the Washington Elementary School Parent Teacher Organization (PTO). The calendar in the monthly newsletter has the dates and times of the PTO meetings. You can also join and watch for updates on the Washington School PTO group on Facebook page.

* Eating Lunch with Your Student

This year we have made a change across elementary schools. All adults who wish to eat lunch with a student in the cafeteria will now have to be approved volunteers. You will need to fill out the background check information the same as a classroom volunteer once every three years. This process takes about two weeks. Adults who do not have an approved background check will not be allowed to eat with their student in the cafeteria. In addition, after lunch adults are not allowed to follow their student to recess. Thank you for your cooperation with this new procedure put in place to keep all our students safe. Thank you for your time!

Jenna Southworth

In this Edition:

Attendance	p. 2
Breakfast & Lunch Menus posted on Website	
Directory Data	p. 2
Free/Reduced Meals	p. 3
Handbook	p. 2
Traffic Map	p. 5
Volunteering at School	p. 4

IMPORTANT DATES TO REMEMBER

Sept. 3	First Day of School 7:45 AM-2:45 PM
Sept. 17	AIMSWeb testing
PTO Meeting 7:00 PM	
Sept. 19	Picture Day
Sept. 25	Vision & Hearing Screening
Oct. 2	National Walk to School day

HANDBOOK & NEWSLETTERS NOW ONLINE

The Student Handbook and monthly newsletters are posted online. All parents will get a hard copy of the first newsletter, but after that you will receive an email alert to link to our online monthly newsletter

To access the Student Handbook and newsletters, go to the District website at: www.marshfieldschools.org Put your cursor on the word "Schools" and then scroll down to Washington Elementary. Click on our school webpage and find the Handbook and monthly newsletters along the left hand side of the page. Just click on them to open them up and read online or run a hard copy for yourself. Please contact the office to request a hard copy of these items if you'd prefer one.

ATTENDANCE REMINDERS

Dear Parents & Guardians,

The 2019-20 school year will be here shortly, and we are all very excited! Staff members have been working very hard to get ready for the students to arrive. Before the school year is underway, I would like to provide very important information about student attendance.

Our # 1 Goal at Washington Elementary is for all students to achieve their very BEST! Parents/Guardians, you play a critical role in achieving this goal. Starting each day on the right foot is the important first step. To be successful, students must arrive at school on time and be prepared for the day. Learning begins at 7:55 AM every day, so it is vital that students arrive at school no later than 7:50 AM. If your student participates in the breakfast program, they should arrive at school no later than 7:35. The school day ends at 2:45 PM.

If students must miss school due to illness or appointments, District policy requires that you call the school or send a signed note that excuses your child when s/he is absent. Please direct these notes and calls to the school office rather than to individual teachers. The number to call to excuse your child is 715-387-1238 and prompt 0 (zero) to leave a message about attendance. Even in the middle of the night, calls to school can be made to school to report that s/he will not be in attendance the next day. If you forget to call or send a note, your child will be counted as unexcused. In cases of absences for medical reasons, please provide the school a statement from a physician so that these days are not used in calculating the 10 excused absences. Thank you for your cooperation.

As a point of reference, parents & students should make every attempt not to miss more than 2 days of school per quarter. Specifically, as written in Wisconsin Statutes:

“A child cannot be excused for more than 10 days in a school year.” SS 118.15(3)(c)

In addition:

“If a student misses part or all of five (5) or more days without an acceptable excuse in a school semester, the student is “habitually truant.” SS 118.16(1)(a)

We want every student to achieve at his or her highest level, and by working together we can make this happen for all of the students at Washington Elementary. Thank you for all that you do to assist the staff members of Washington Elementary in our goal of providing the very best for your child.

Sincerely,

Jenna Southworth, Principal

DIRECTORY DATA INFORMATION

The School Board has developed a policy regarding the dissemination of Student Directory Data. Student Directory Data refers to the following items: student name, address, phone number, and the name of parents and/or guardians. If you wish to keep all or part of this information private, you need to notify the Principal.

The same applies to videotaping your child at school or releasing any personal information on your child for a newspaper article or picture or for a TV clip. Please see the online handbook for more details on this.

DISPENSING MEDICATION AT SCHOOL

The student handbook contains detailed information regarding the dispensing of medication at school, so we ask that you read this information very carefully. **We would like to highlight the fact that written authorization from a physician is required for prescription medications to be dispensed by school personnel. Also, parents are required to bring the medications to school.**

Medication authorization forms are available at the school office. Nonprescription medications will only be dispensed upon written authorization from a parent or guardian.

FREE/REDUCED MEALS APPLICATION FORM

We encourage you to consider applying for the “Free and Reduced Price School Meals Program” that is available in our school. Many parents do not take advantage of the fact that they might qualify for free or reduced priced meals – both breakfast and lunch – at school. This program is beneficial to you if you qualify and it is also beneficial to the school district if you qualify. You may apply for Free and Reduced Lunches online electronically through your Family Skyward Access or you can pick up an application in the office. Please contact Mrs. Immerfall or Ms. Southworth at 387-1238 if you have any questions about completing this form. All information is kept strictly confidential.

Households that are receiving Food Share or W-2 benefits DO NOT have to fill out an application for free meals this year. Those households are directly certified and automatically qualify for free meals. School officials will notify you of your child’s eligibility and your child will be provided free meals unless you tell the school that you do not want that benefit. If you have not been notified by September 13, 2019 submit an application at that time. The application must contain the child’s name, the Food Share or W-2 cash benefits case number, and the signature of an adult household member.

ONLINE PAYMENTS NOW AVAILABLE!

For your convenience, the Marshfield Area School District has contracted with RevTrak, a national credit card payment processor, to provide you a simple, secure, and convenient way of making online payments for lunch and registration payments. Parents register through the Skyward Family Access parent portal, then pay online with VISA, MasterCard, or Discover credit or debit cards. In addition to school registration, parents can also pay online for other optional School District fees. Our Web Store accepts payments over the internet 24/7. **Please note:** There will be a \$0.25 convenience charged at checkout.

Pay the Following Fees Online:

- Food Service (Skyward)
- Registration Fees

Parents can make payments online while on their home or work computer, any time of the day. It only takes a few minutes to make a payment using a VISA, MasterCard, or Discover credit or debit card.

To make an online payment follow these simple steps:

- Visit our district site
<http://www.marshfieldschools.org>
- Click on the **Skyward Family Access**
- Follow prompts to shop
- Make payment using a **VISA, MasterCard, or Discover** debit or credit card

A payment receipt will be emailed to the address used when setting up the web store account. To view/print previous online payments or to update login information please click on **My Account**.

If you have any questions, please contact your school office.



WALK TO SCHOOL DAY

Children throughout Marshfield are encouraged to walk or bike to school on “Walk to School Day.” This international event will be held on Wednesday, October 2nd. Each Marshfield area school will plan a special event to encourage students to walk or bike to school on a regular basis. In addition, a one month walk/bike to school challenge will begin on October 1st through October 31st. Participating students are eligible to win bike helmets, tee-shirts, reflector strips, and one grand prize winner will receive a new bike! More information to follow!



Reasons to walk or bike

- Being eco-friendly
- Increasing physical activity
- Reducing traffic congestion and speed near schools
- Sharing time with community leaders, parents and children.

The School Board supports community involvement as an integral part of the educational goals of the School District of Marshfield. As such, volunteerism is recommended and encouraged. Specifically, volunteers can:

- Enrich the school program by sharing their experiences and talents with students.
- Provide an opportunity for interested community members to become directly involved with education.
- Provide students with reinforcement of skills.
- Strengthen school-community partnerships through direct and positive participation within the schools.

The safety and well-being of students and staff is of paramount importance, so volunteers must be approved in advance by the Superintendent. All adults who volunteer in the schools for educational purposes, including supervision on field trips, must complete the Volunteer Application and will be subject to a criminal background check. All information is kept strictly confidential. Forms are available in the school office.

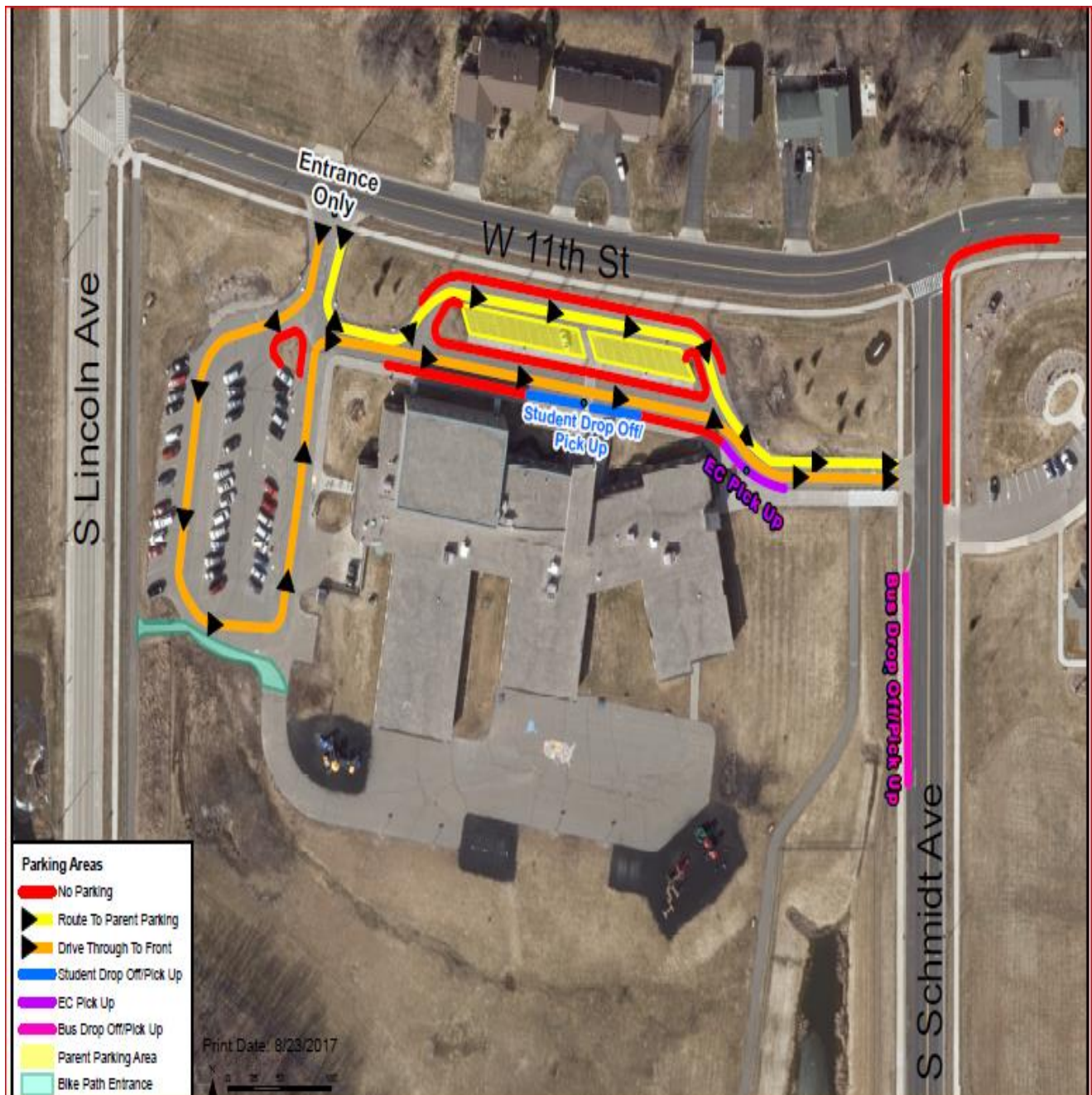
The District’s policy on volunteering was updated in order to establish routine background checks to be completed on all district volunteers. Below is an outline of some of those changes.

- The volunteer form has been updated. Please visit the District’s website for the updated form www.marshfieldschools.org or please request a form through the school secretary.
A copy of your driver’s license can be made by the school secretary if you are unable to print a clear copy.
- Those volunteering on field trips will need to be approved on an annual basis.
- Those volunteering for in-classroom activities will only need to be approved every 3 years.
- A volunteer form needs to be filled out and processed prior to eating lunch with student.

VOLUNTEERING AT SCHOOL

DROP OFF AND PICK UP PROCEDURES FOR DRIVERS

1. Enter school property on 11th Street.
2. Use East Lane to access Parent Parking in front (YELLOW). After parking, adults will use the cross walk to escort the student to and from the front doors.
3. Use West Lane to access drop off and pick up in front of school (ORANGE). Drivers will loop through the staff lot to access the front area. Drivers cannot park in Fire Lanes. Drivers should not arrive before 2:30 afternoon pick up unless child is in Early Childhood Program.
4. Drivers exit school property onto Schmidt St.
5. School Buses will drop off & pick up students in designated area on Schmidt St.
6. Students arriving early for Breakfast will enter through the front doors. The West exit is for staff only and is no longer a drop off area. Students arriving before 7:45 will be dropped off in front and use the sidewalk to get to the playground.
7. No parking in areas designated in RED.






BREAKFAST

Elementary

September 2019

MONDAY	TUESDAY	WEDNESDAY	THURSDAY	FRIDAY
No School Labor Day!	3 Breakfast Kit <i>(includes cereal, crackers and 100% Juice)</i> Fruit Cup Milk	4 HOT Mini Waffles Fruit Cup 100% Fruit Juice Milk	5 Whole Grain Muffin String Cheese Fruit Cup Milk	6 HOT Fruit Strudel 100% Fruit Juice Fruit Cup Milk
9 Breakfast Kit <i>(includes cereal, crackers and 100% Juice)</i> Fruit Cup Milk	10 Yogurt Cup w/ Scooby Crackers Fresh Fruit Milk	11 HOT Pancake/Stick Fruit Cup 100% Fruit Juice Milk	12 Purple Daze Smoothie String Cheese Fresh Fruit Milk	13 HOT Breakfast Wrap Fruit Cup 100% Fruit Juice Milk
16 Whole Grain Cereal String Cheese Fruit Cup Milk	17 Zucchini Bread Slice String Cheese Fresh Fruit Milk	18 HOT Mini Cinis Fruit Cup 100% Fruit Juice Milk	19 Yogurt Parfait w/ Homemade Granola Dried Cranberries Strawberries/Blueberries Milk	20 HOT Omelet with Homemade Bread Fruit Cup 100% Fruit Juice Milk
23 Breakfast Kit <i>(includes cereal, crackers and 100% Juice)</i> Fruit Cup Milk	24 Mini Cream Cheese Filled Bagels Fruit Cup 100% Fruit Juice Milk	25 HOT Soft Filled Cereal Bar Fresh Fruit Raisins Milk	26 HOMEMADE COFFEECAKE Nasonville Dairy Cheese Fruit Cup Milk	27 HOT Pancake Bites Fresh Fruit 100% Fruit Juice Milk
30 Whole Grain Cereal String Cheese Fruit Cup Milk	 <p>FREE/REDUCED MEALS: If you would like to receive free or reduced priced meals, please complete a Free and Reduced meal application. One application will cover the entire household. You can also apply online under your Skyward Family Access account.</p>			

MEAL PRICES

Breakfast Prices:

Paid (Elementary): \$1.35
Paid (MS/HS): \$1.50
Reduced: \$0.25
Adult/Seconds: \$2.00

Lunch Prices:

Paid (Elementary): \$2.70
Paid (Middle School): \$2.80
Paid (High School): \$3.00
Reduced: \$0.40
Adult/Seconds: \$3.75
Second Entrée: \$2.25
Milk: \$0.40

ICE COLD MILK

OPTIONS:

Fat Free White
Low Fat White
Fat Free Chocolate
*All Meals Include

All grain and bread products are 100% whole grain



Farm to School

See website for a food allergen/pork listing

Menus are subject to change.

This institution is an equal opportunity provider.



LUNCH

Elementary

September 2019

MONDAY	TUESDAY	WEDNESDAY	THURSDAY	FRIDAY
<p>No School Labor Day!</p>	<p>3 Chicken Nuggets Fresh Apple Peaches Fresh Carrots Steamed Green Beans</p>	<p>4 Mini Corn Dogs Strawberries Mandarin Oranges Fresh Broccoli Baked Beans</p>	<p>5 Spaghetti w/ Meatballs Garlic Toast Orange Wedges Pears Garden Salad w/ Tomatoes Mixed Vegetables</p>	<p>6 Hot Cheesy Sticks w/ Marinara Sauce Fresh Grapes Pineapple Fresh Carrots Steamed Corn</p>
<p>9 Cheese Omelet w/ Ham & Homemade Bread Applesauce Mixed Fruit Wisc. Vegetable Blend Garden Salad w/ Tomatoes</p>	<p>10 Soft Shell Taco Fiesta Beans Pears Orange Wedges Lettuce & Tomatoes Shredded Cheese</p>	<p>11 Pepperoni Pizza Apple Slices Mandarin Oranges Fresh Carrots Steamed Corn V-Blend Juice</p>	<p>12 Cheeseburger on a Bun Orange Wedges Peaches Garden Salad w/ Tomatoes Green Beans Strawberry Milk</p>	<p>13 French Toast Sticks w/ Little Smokies Fresh Grapes Pineapple Fresh Carrots Cucumber Slices</p>
<p>16 Chicken Snack Wrap Fresh Apples Peaches Lettuce, Tomato Shredded Cheese Mixed Vegetables</p>	<p>17 Taco Salad Orange Wedges Pears Lettuce, Tomato, Cheese Fiesta Beans</p>	<p>18 Mini Sub Sandwich w/ Sweet Potato Fries Fresh Strawberries Apple Slices Fresh Carrots and Broccoli Mini Rice Krispy Treat</p>	<p>19 Popcorn Chicken Orange Wedges Mixed Fruit Garden Salad w/ Tomatoes Steamed Corn</p>	<p>20 Hewitt Meat Hot Dog/Bun Fresh Watermelon Dried Cranberries Potato Salad Baked Beans</p>
<p>23 Chicken Strips Apple Slices Pears Garden Salad w/ Tomatoes Fresh Broccoli</p>	<p>24 BBQ Pork on a Bun Orange Wedges Mixed Fruit Fresh Carrots Baked Beans</p>	<p>25 Mini Corn Dogs Fresh Apple Pineapple Cucumbers Mixed Vegetables</p>	<p>26 Creamed Chicken w/ Mashed Potatoes & T-Bun Orange Wedges Peaches Garden Salad w/ Tomatoes Fresh Broccoli</p>	<p>27 Cheese Pizza Fresh Grapes Strawberries Fresh Carrots Green Beans Orange Sorbet</p>
<p>30 Chicken Nuggets Apple Slices Pears Fresh Carrots Brussel Sprouts</p>	<p align="center">— WELCOME — BACK TO SCHOOL</p>			
<p> Farm to School</p>	<p> Meatless Entree</p>	<p> Featured Recipe</p>	<p>See website for food allergens, carbohydrate counts, pork product list and all featured recipes. www.marshfieldschools.org</p>	

Menus are subject to change.

This institution is an equal opportunity provider.

MEAL PRICES

Breakfast Prices:

Paid (Elementary): \$1.35
Paid (MS/HS): \$1.50
Reduced: \$0.25
Adult/Seconds: \$2.00

Lunch Prices:

Paid (Elementary): \$2.70
Paid (Middle School): \$2.80
Paid (High School): \$3.00
Reduced: \$0.40
Adult/Seconds: \$3.75
Second Entrée: \$2.25
Milk: \$0.40

Online Meal Payments

Online meal payments are now available. Payments can be made through your Family Skyward Access. If you do not have your username/password, please stop into your school office.



All of our homemade breads and buns are 100% whole grain and baked fresh daily.



Ice cold milk options available daily: fat free white, low fat white, and fat free chocolate.

